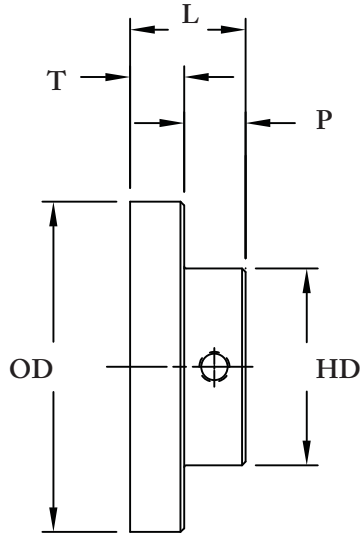


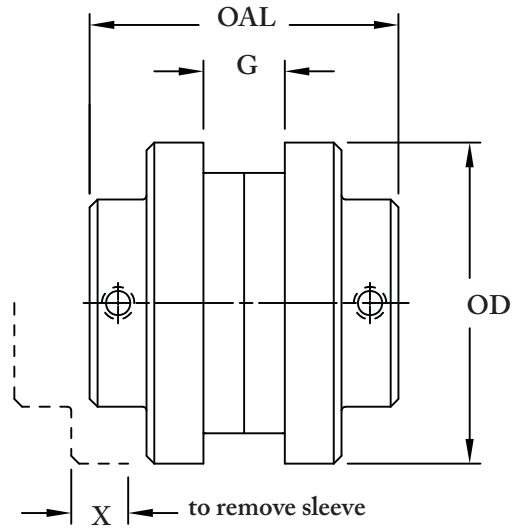


FIRM-FLEX COUPLINGS

J-TYPE FLANGE



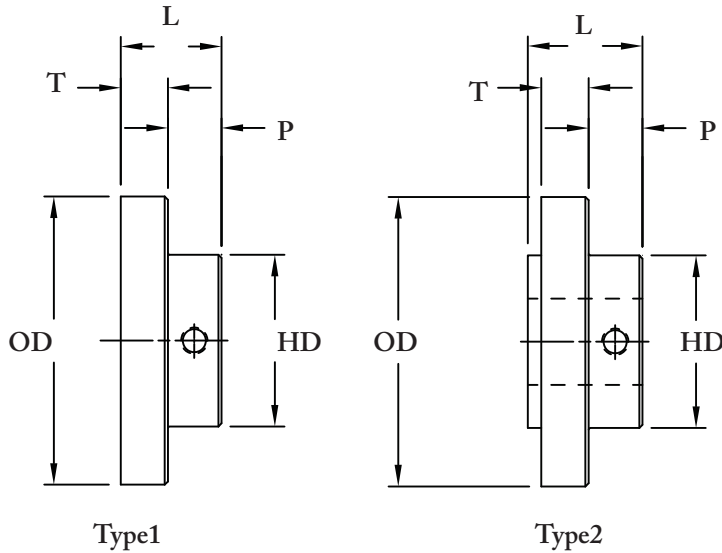
J Type Flange



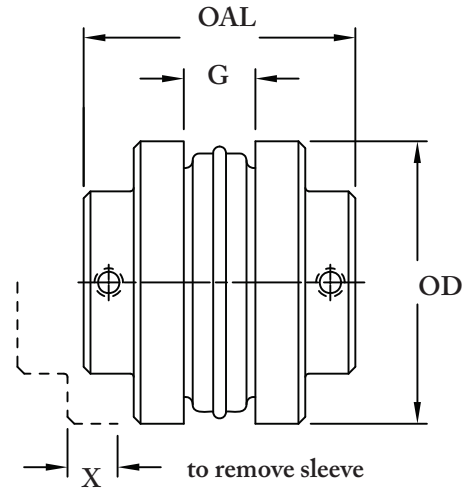
J Type Coupling

Flange Size	Dimensions (inches)								Weight (lbs)	
	L	OD	P	G	HD	OAL	T	X	Flange	Coupling
3J	0.8125	2.062	0.44	0.375	1.500	2.000	0.375	0.563	0.30	0.68
4J	0.8750	2.460	0.44	0.625	1.625	2.375	0.438	0.750	0.40	0.89
5J	1.0625	3.250	0.47	0.750	1.875	2.875	0.594	0.969	1.10	2.40
6JT1	1.2188	4.000	0.59	0.875	1.938	3.313	0.594	1.094	1.90	4.36
6JT2	1.2188	4.000	0.59	0.875	2.500	3.313	0.625	1.094	1.90	4.36

J-Flange material: Sintered Steel



S Type Flange



S Type Coupling

Flange Size	TYPE	Dimensions (inches)								Weight Flange
		L	OD	P	G	HD	OAL	T	X	
5S	2	1.34	3.250	0.45	0.75	1.875	2.84	0.59	0.97	1.1
6S-1	2	1.63	4.000	0.56	0.875	2.500	3.56	0.78	1.09	1.9
6S-2	1	1.31	4.000	0.53	0.875	2.500	3.50	0.78	1.09	1.9
6S-3	1	1.56	4.000	0.78	0.875	2.813	4.00	0.78	1.09	1.9
7S	2	1.84	4.625	0.69	1	2.813	3.94	0.78	1.31	2.6
8S-1	2	2.09	5.450	0.75	1.125	3.250	4.44	0.91	1.50	4.4
8S-2	1	1.94	5.450	1.03	1.125	3.250	5.00	0.91	1.50	3.7
9S-1	2	2.41	6.350	0.78	1.437	3.625	5.06	1.03	1.75	6.5
9S-2	1	2.28	6.350	1.25	1.437	4.125	6.00	1.03	1.75	6.2
10S-1	2	2.66	7.500	0.81	1.625	4.375	5.69	1.22	2.00	10.5
10S-2	1	2.69	7.500	1.47	1.625	4.750	7.00	1.22	2.00	10.5
11S-1	2	3.44	8.625	1.13	1.88	3.750	7.13	1.50	2.38	16.6
11S-2	2	3.44	8.625	1.13	1.88	4.875	7.13	1.50	2.38	16.6
11S-3	2	3.44	8.625	1.13	1.88	5.250	7.13	1.50	2.38	16.6
11S-4	2	3.06	8.625	1.56	1.88	5.625	8.00	1.50	2.38	16.6
12S-1	2	4.00	10.000	1.28	2.31	3.750	8.25	1.69	2.69	27.5
12S-2	2	4.00	10.000	1.28	2.31	4.875	8.25	1.69	2.69	27.5
12S-3	2	4.00	10.000	1.28	2.31	5.750	8.25	1.69	2.69	27.5
13S-1	2	4.38	11.750	1.31	2.69	4.875	9.25	1.97	3.06	45
13S-2	2	4.38	11.750	1.31	2.69	6.750	9.25	1.97	3.06	45
14S-1	2	4.50	13.875	1.06	3.25	4.875	9.88	2.25	3.50	69
14S-2	2	4.50	13.875	1.06	3.25	7.500	9.88	2.25	3.50	69

S-Flange material: Cast Iron (GG20-22)



FIRM-FLEX COUPLINGS

Flange Size	Stock Bore (inches)	Keyseat
3J	3/8 · 1/2	none
	5/8 · 3/4 · 7/8	3/16 x 3/32
4J	1/2	none
	5/8 · 3/4 · 7/8	3/16 x 3/32
	15/16 · 1	1/4 x 1/8
5J	1/2	none
	5/8 · 3/4 · 7/8	3/16 x 3/32
	15/16 · 1 · 1-1/8	1/4 x 1/8
6JT1	5/8 · 3/4 · 7/8	3/16 x 3/32
	15/16 · 1	1/4 x 1/8
6JT2	1-1/8 · 1-3/16 · 1-1/4	1/4 x 1/8
	1-3/8	5/16 x 5/32

SLEEVE

Type	Description
EPDM	ThermoPlastic, one piece solid
EPDMS	ThermoPlastic, one piece split
REM	ThermoPlastic, two piece w/Retaining Ring
RN	Neoprene, 2 piece w/Retaining Ring
RH	Hytrell, one piece solid

Flange Size	Stock Bore (inches)	Keyseat
5S	5/8 · 3/4 · 13/16 · 7/8	3/16 x 3/32
	15/16 · 1 · 1 1/16 · 1 1/8	1/4 x 1/8
	1 3/16	1/4 x 1/8
6S-1	1 1/4	1/4 x 1/16**
	3/4 · 7/8	3/16 x 3/32
	15/16 · 1 · 1 1/16 · 1 1/8	1/4 x 1/8
	1 3/16 · 1 1/4	1/4 x 1/8
	1 5/16 · 1 3/8	5/16 x 5/32
6S-2	1 7/16	3/8 x 3/16
	1 1/2	3/8 x 1/8**
	1 5/8	3/8 x 1/8**
6S-3	1 3/4	3/8 x 1/16**
	1 7/8	1/2 x 1/8**
7S	3/4 · 7/8	3/16 x 3/32
	15/16 · 1 · 1 1/16 · 1 1/8	1/4 x 1/8
	1 3/16 · 1 1/4	1/4 x 1/8
	1 5/16 · 1 3/8	5/16 x 5/32
	1 7/16 · 1 1/2 · 1 5/8	3/8 x 3/16
	1 7/8	1/2 x 1/8**
8S-1	3/4 · 7/8	3/16 x 3/32
	15/16 · 1 · 1 1/8 · 1 3/16	1/4 x 1/8
	1 1/4	1/4 x 1/8
	1 5/16 · 1 3/8	5/16 x 5/32
	1 7/16 · 1 1/2 · 1 9/16 · 1 5/8	3/8 x 3/16
	1 11/16 · 1 3/4	3/8 x 3/16
	1 7/8 · 1 15/16	1/2 x 1/4
	2 1/8	1/2 x 3/16**
8S-2	2 3/8	5/8 x 1/8**
9S-1	7/8	3/16 x 3/32
	1 · 1 1/8 · 1 1/4	1/4 x 1/8
	1 3/8	5/16 x 5/32
	1 7/16 · 1 1/2 · 1 9/16 · 1 5/8	3/8 x 3/16
	1 11/16 · 1 3/4	3/8 x 3/16
	1 7/8 · 1 15/16 · 2 · 2 1/8	1/2 x 1/4
	2 3/16 · 2 1/4	1/2 x 1/4
2 3/8 · 2 1/2	5/8 x 5/16	
9S-2	2 7/8	3/4 x 1/8**
10S-1	1 1/8 · 1 1/4	1/4 x 1/8
	1 3/8	5/16 x 5/32
	1 7/16 · 1 1/2 · 1 9/16 · 1 5/8	3/8 x 3/16
	1 11/16 · 1 3/4	3/8 x 3/16
	1 7/8 · 1 15/16 · 2 · 2 1/8 · 2 3/16 · 2 1/4	1/2 x 1/4
	2 3/8 · 2 7/16 · 2 1/2 · 2 5/8 3/4	5/8 x 5/16
2 7/8	3/4 x 1/4**	
10S-2	3 3/8	7/8 x 3/16**
11S-1	1 1/4	1/4 x 1/8
	1 3/8	5/16 x 5/32
	1 1/2 · 1 5/8 · 1 3/4	3/8 x 3/16
	1 7/8 · 2 · 2 1/8 · 2 1/4	1/2 x 1/4
11S-2	2 3/8 · 2 3/4	5/8 x 5/16
2 7/8	3/4 x 3/8	
11S-3	3 3/8	7/8 x 7/16
	3 7/16	7/8 x 3/16**
11S-4	3 7/8	1 x 1/4**
12S-1	1 7/8 · 2 1/8	1/2 x 1/4
12S-2	2 3/8 · 2 3/4	5/8 x 5/16
	2 7/8	3/4 x 3/8
12S-3	3 3/8 · 3 7/16	7/8 x 7/16
	3 7/8	1 x 1/2